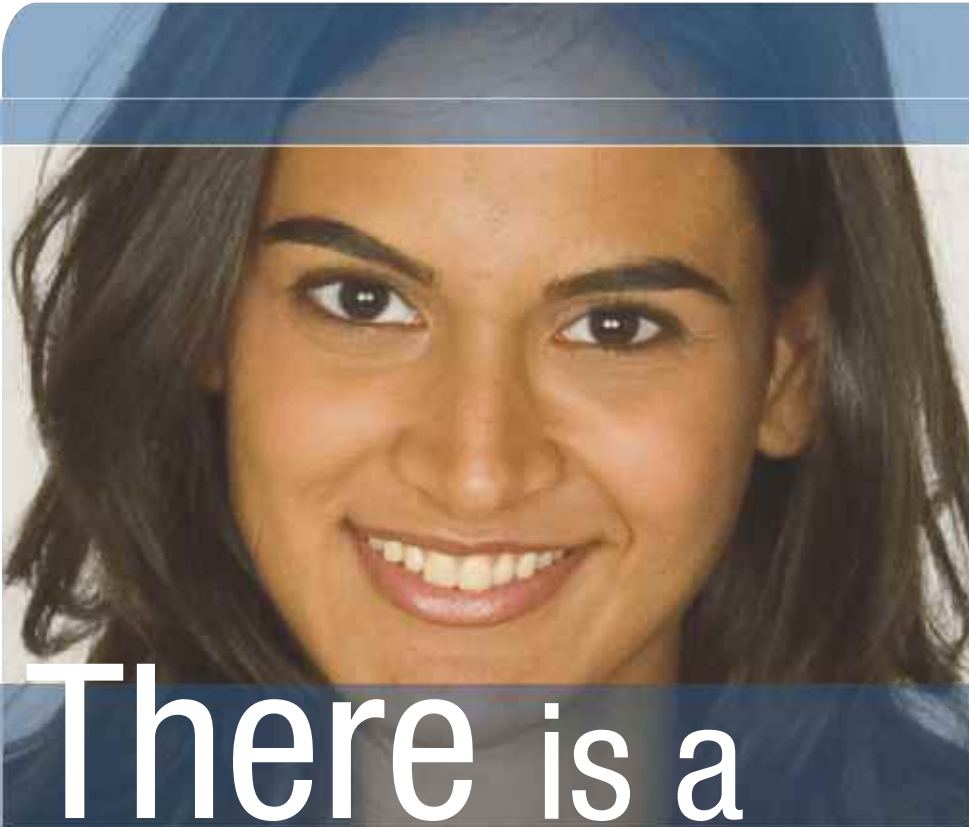


Lava™

Crowns and Bridges



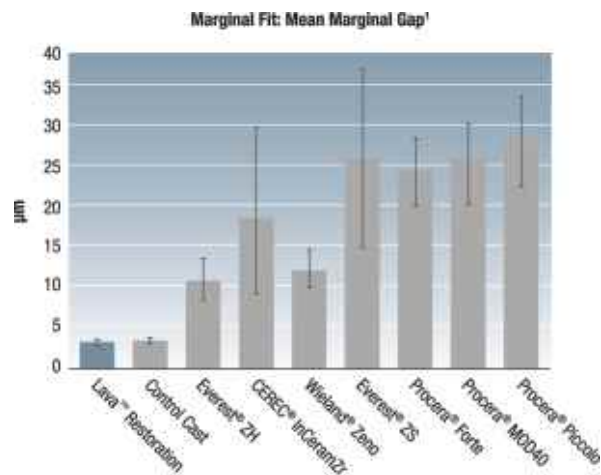
There is a
Difference

Lava™ Crowns and Bridges

Precision fit, proven strength and natural aesthetics.

Lava™ Crowns and Bridges from 3M ESPE has been established as a leading brand in CAD/CAM- produced zirconia restorations through its precise fit, proven strength and natural aesthetics. 3M has over 100 years of manufacturing excellence and more than 25 years of zirconia research and processing, 3M ESPE brings vast expertise in materials science and systems integration to create products that consistently meet the high standard that doctors and labs expect.

Lava crowns and bridges from 3M ESPE.



Source: 3M ESPE internal data

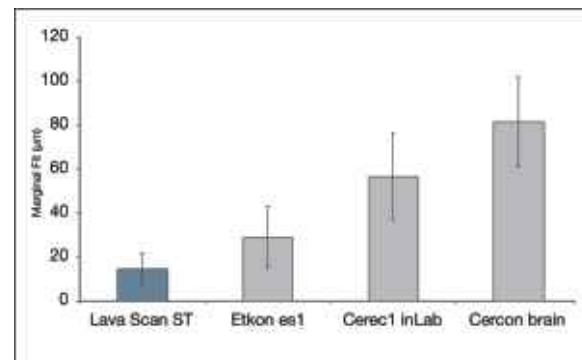


fig. 3 Marginal gap of 3-unit zirconia 3M™ ESPE™ Lava™ Bridges in comparison to competitor systems. F. Beuer et al., University of Munich.⁹



Backlit view shows shadowing of the PFM restoration due to the metal substructure

Backlit view shows the Lava restoration's beautiful, natural translucency



Just send your prescription to the Lava certified lab of your choice. Be sure to request genuine Lava™ Zirconia.

Summary of advantages

- Precision **CAD/CAM** system for outstanding marginal fit
- **Superior fit** relative to leading competition^{1,2,3,4}
- Proven high strength performance-**1440 Mpa** 3-pt. bend strength⁵
- **5-year clinical study** with 100% survival rate⁶
- **Natural translucency** and unmatched aesthetics
- Patented substructure system available in **8 shades**.

Lava restorations offer high strength performance, outstanding marginal fit and excellent esthetics.

Now the following indications are available from the Lava System:

- **NEW!** Custom Zirconia Abutments for a wide variety of implant systems
- **NEW!** Inlay and Onlay Bridges*
- **NEW!** Maryland Bridges*
- **NEW!** Primary Telescopes
- **NEW!** 6-Unit Bridges with up to 4 pontics in the anterior region
- Single Crowns
- Splinted Crowns
- Cantilever Bridges with cantilever unit on premolar or incisor*

*Tests have proven: Lava™ Zirconia shows a sufficient strength for this indication. However, this type of indication overall can have a higher failure risk due to decementation and secondary caries regardless of manufacturer. Please refer to national and regional dental associations for more information.

Design 4.0



NEW!



Custom Zirconia Abutments for a wide variety of implant systems



Inlay and Onlay Bridges



Maryland Bridges

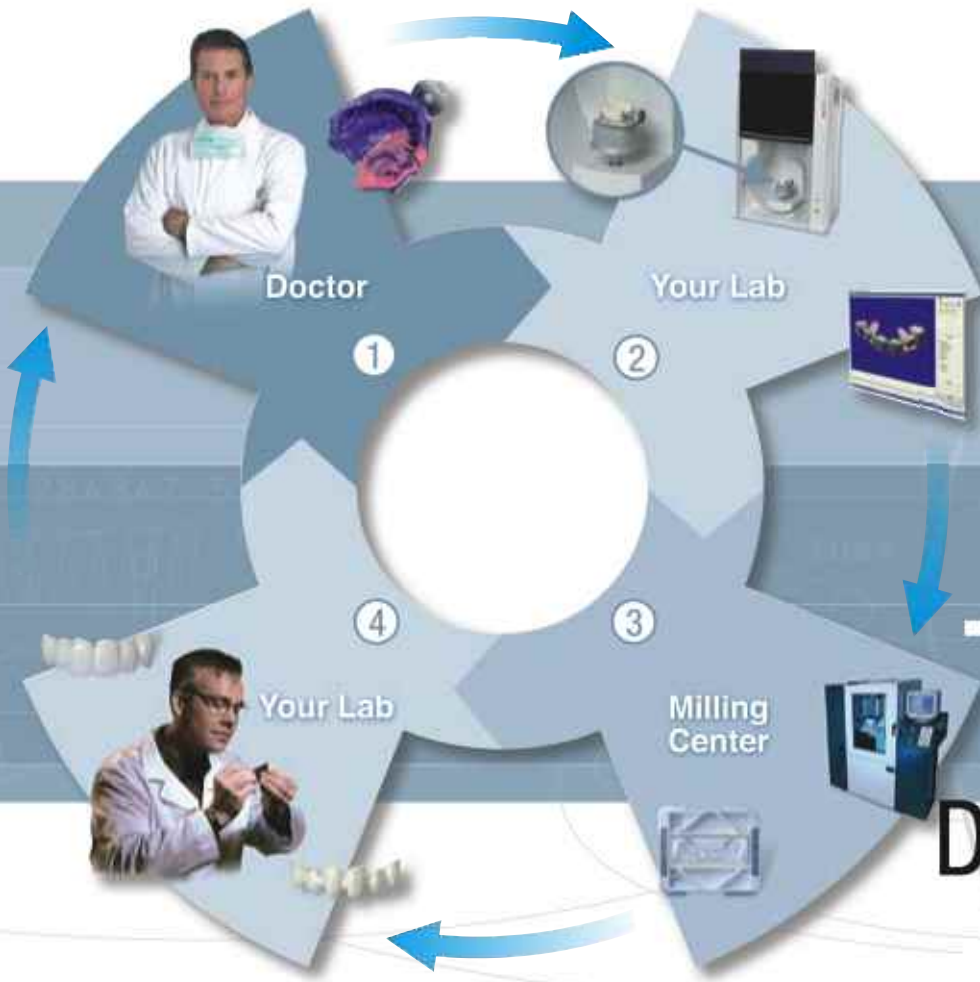


Primary Telescopes



6-Unit Anterior Bridges with up to 4 pontics

NEW!



Today's Digital Workflow

You + 3M ESPE =
A formula for success

3M ESPE

3M India Limited

Concorde Block, UB City, 24, Vittal Mallya Road, Bangalore - 560001
Tel : +91-80- 22231414/66595759 Fax : +91-80-22231450
www.3mespeindia.com

3M Health Care Helpline 1-800-425-3030 Toll Free

For more information Contact
Mr. Sujit Hota, Mumbai Ph: 09324510023
Dr. Roshan Verghese, Delhi Ph: 09711170503
Mr. George Abraham Ph: 09900170905

1. 0828 In-Vitro Vertical Marginal Gap Comparison of CAD/CAM Zirconium Copings, A.J.T. Shannon, F. Qian, P. Tan, and D. Gratton, University of Iowa, Iowa City, USA (2007)
2. 3M ESPE Lava showed the lowest marginal and absolute marginal gap in comparison to Cercon and DCS, A. Piwowarczyk, H.-C. Lauer, Determining the marginal fit of CAD/CAM bridge frameworks, Pan European Federation Conference (PEF; CED) #0254 (2006)
3. Lava 3-unit bridges showed smallest Marginal gap v. Etkon, Cercon brain, Cerec Inlab, F. Beuer, T. Fischer, K.-J. Erdelt, H.-U. Aggstaller, K. Spiegl, W. Gernet; (2005) IADR #1336 and In-vitro Study Marginal fit of Lava restorations; F. Beuer, T. Fischer, K.-J. Erdelt, H.-U. Aggstaller, K. Spiegl, W. Gernet, industrial report (2006)
4. Key Group Study, "Accuracy of fit" listed as #1 out of 16 possible attributes. 134 total doctor responses (October 2006)
5. 3M ESPE Internal 3 pt- Bending Test - ISO 6872 (September 2005)
6. 3-unit posterior bridges, P. Pospeich, University of Homburg, Homburg (Start 2000)
7. Photos courtesy of MDT V. Weber and Dr. D. Edelhoff, Aachen.
8. Photography and case study courtesy of Dr. Heather Rehtlin.
9. Dentistry and clinical photography courtesy of Ariel Raigrodski, DMD, MS; Ceramics, Mr. Andreas Saltzer, CDT.